

Tips and Technology

For Bosch partners

Current information for the successful workshop No. 12/2015

Electrics / Electronics



BOSCH
Invented for life

Complementary installation instructions for Mazda models with RF turbo-diesel engine



Drive belts are wear parts and are exposed to high stress in the vehicle. Please note the instructions below in addition to the ES[tronic] installation guide when changing the timingbelt or complete kits.

Applies to the following models:

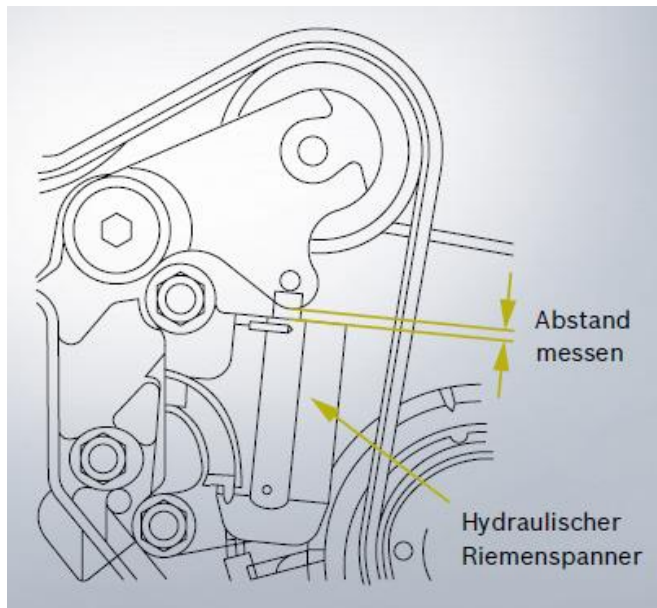
- Mazda 6 (GG/GY)
- Mazda 5 (CR)
- Mazda 323 (BJ)
- Mazda Premacy (CP)
- Mazda MPV (LW)
- Mazda 626 (GF/GW)

Bosch TTN/order numbers:

- 1 987 948 167 timing-belt/tensioner-pulley kit
- 1 987 948 168 timing-belt/tensioning-element kit
- 1 987 949 601 timing-belts

Step 1: Distance measurement

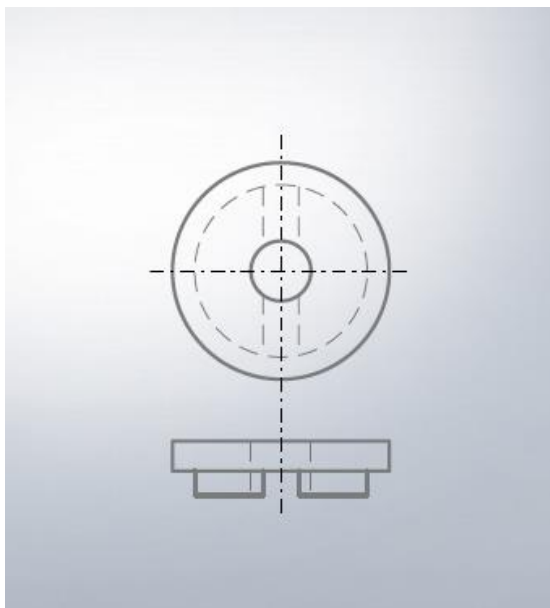
Measurement of the distance between belt tensioner and lever of the tensioning pulley.



The distance between the housing of the hydraulic belt tensioner and the lever of the tensioning pulley should be max. 4.5 mm.

Step 2: Installing a spacer

Installation of the Mazda spacer.

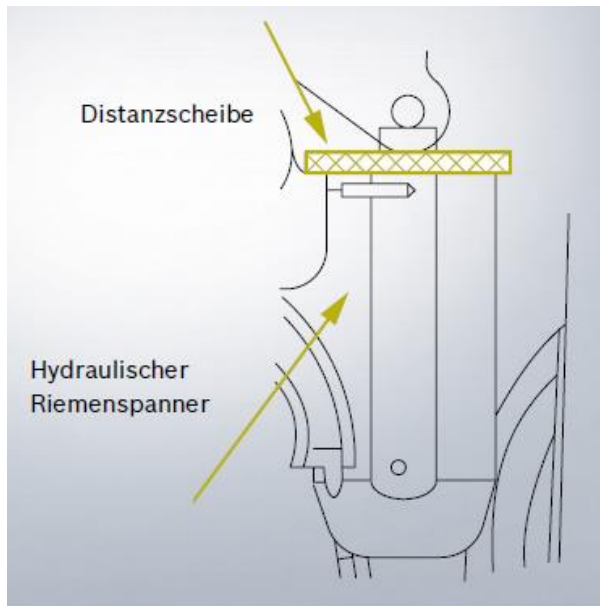


In the case of the mentioned Mazda models, the vehicle manufacturer's additional spacer has to be installed if the distance exceed 4.5 mm.

Order no. RFY0-12-715

Step 3: Assembly of the spacer

Assembly of the spacer at a measured distance > 4.5 mm.



- Dismount the timing-belt
- Disassemble the automatic timing-belt tensioner
- Press the spacer onto the top of the timing-belt tensioner
- Reassemble the timing-belt tensioner and the timing-belt

Your benefits – satisfaction for your customers:

- Correct alignment of the timing-belt
- Protection of the ribs of the timing-belt against damage caused by the cover
- No coming off of the timing-belt under extremely frosty conditions
- Safe start of the engine
- Safety for the workshop, the vehicle owner and the engine